

Toyota Alphard

2023



TROSSACHS



CAMPERS

Introduction

Free Indoor Parking

Secure indoor parking with CCTV (please note, vehicles are left at the owner's risk and no responsibility resides with Trossachs Campers).



Unlimited Miles

Exactly as it says.

24/7 Nationwide RAC Breakdown Cover

Please see the contacts page (back) for details on how to contact the RAC if required.



Comprehensive Insurance

Fully comprehensive insurance as standard. Please note, this only covers the approved drivers, the vehicle cannot be taken 'off-road' and the correct type of fuel must be used (**no diesel!**).

Habitation & Gas Landlord Certificates

Gas, electrics, and all safety equipment have been inspected and approved with certificates available.

Camping & Caravan Club Membership

Up to 30% off site fees by using code UKMHIRE when booking online as a discount code (the vehicle is registered with the C&CC, you simply need to present the keyfob and registration upon arrival)



Dual Fuel: Petrol & LPG (Autogas)

The vehicle runs on both petrol and LPG. You can use either or both (you can switch between fuels seamlessly at the press of a button).

Driver Controls

Automatic Gearbox

4 Speed automatic gearbox. D for drive, R for reverse and P for park.

Foot Parking Brake

The foot parking brake is non-automatic and must be applied manually when parking and depressed before driving off.

Steering Wheel Controls

The infotainment system can be operated from the steering wheel controls, this includes radio, stereo and phone calls.

Left Stalk

Wipers front and rear are operated from the left stalk.

Right Stalk

Indicators and lights (including front fog lights) are operated from the right stalk.

Centre Console

Hazard lights, heating, air con and the infotainment system (Android Auto/Apple Car Play).

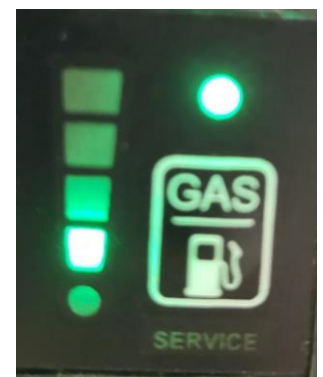
Right of Steering Wheel

The rear fog light, mirror adjustment (including folding when parked to avoid damage) and LPG controls are found to the right of the steering wheel.

LPG can be switched on and off by pressing the gas symbol.

When switched on:

- the circular green light will flash when the engine is warming up (on petrol) and will switch to LPG after approximately 30 seconds
- the circular green light will stay on when the vehicle is running on LPG
- the circular red light indicates low LPG (please note, unlike the petrol gauge, the LPG gauge goes down quickly then stays on red for a very long time, no need to be concerned about this)
- if running on LPG, when LPG runs out the vehicle will beep then switch seamlessly back to petrol



The vehicle requires petrol to start. Please ensure that the vehicle does not run out of petrol!

Front Storage

Passenger Door

First Aid Kit (unopened), Puncture Repair Kit (unopened) and 2 high vis vests.

Driver Door

Umbrella.

Top Glove Compartment

Nighttime windscreen cover & LPG gloves.

Bottom Glove Compartment

Spare USB socket, USB splitter, spare external light / torch x2 and USB to cigarette lighter.

Centre Floor Storage

Paper maps, playing cards and Camping and Caravan Club info.

Centre Dash Storage

Empty.

Living Area

Pop Top

Raise the roof by simply loosening the two black straps and pushing. You can then create headroom by 'stacking' the bed panels at the rear (or lay them down if you wish to use them as a surface for sleeping on). There is also ventilation windows which can be unzipped (useful for cooking).



To lower the roof, firstly lay the boards flat again (otherwise the roof won't lower properly and you will put too much pressure on the struts) then pull the handles down, pull the fabric in (so it is not trapped outside) and secure with the two straps tightly before moving off.



Swivel Passenger Seat

The passenger seat can be rotated by firstly moving it forward, adjusting the 'back' to lean forward, then pulling the red lever on the inside. The seat should then be free to rotate and can be adjusted to suit. Please ensure that the seat is fixed in place properly before using it as a passenger seat whilst driving.



Safety

Fire extinguisher (expiry 2026), carbon monoxide and smoke alarms.

Electrics

The electric panel should be switched on if you want the fridge/freezer to work and if you wish to use the tap (electric pump) or lights. The 240v socket will only work if you are connected to an electric hook up (on a campsite).



Kitchen

2 hob cooker and sink with 35L fridge/freezer (switch on and off inside right). To use the stove, you will need to open the gas regulator. **Be careful to extinguish the stove before you close the glass top. You should also open a window or vent when cooking.**

Heating

The habitation heater runs off gas, so the regulator must be opened. **Remember to close the regulator on the gas cylinder before driving.**

Lighting

There are numerous LED lights which can be operated independently.

Storage

There is storage below the stove and sink. Upper storage (usually used for food) and lower storage (usually for clothes). There is storage behind the grey shutter (usually used for bedding) and further storage below the bed (usually used for boots etc.)



Exterior

Bonnet & Fuel Release Levers

Both are located right and below steering wheel.

Fuel Cap

Opened with lever right and below of steering wheel. Please note **petrol only** for liquid fuel.

LPG (Autogas)

To find stations which supply LPG use

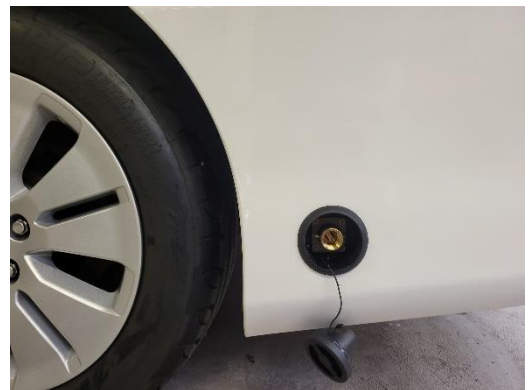
<https://www.autogas.app>

To connect LPG hose watch:

<https://www.youtube.com/watch?v=ZUC54AY-Qc4>

LPG filler is also found on rear bumper.

Please wear the gloves provided when refilling. If in doubt, please ask a station attendant.

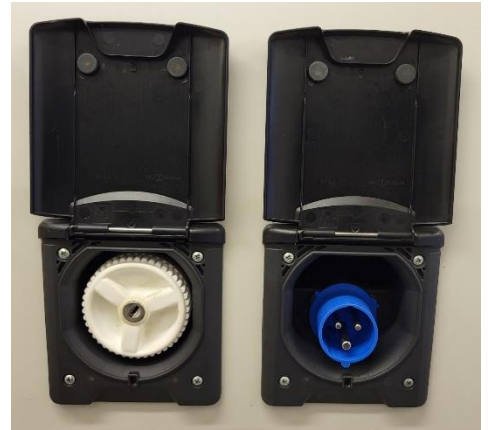


When adaptor and hose are attached correctly, press fill button, the pump will cut out when the tank is full (LPG tanks fill to 85% so expect approximately 65L when filling from empty). Release the hose attachment (expecting excess gas to be released) and fully detach. Replace black LPG cap.

Remember, the vehicle can run on petrol, so if unable to refill with LPG simply refill with petrol as normal.

Drinking Water Refill

This requires a key which is on the key fob. Please refill with hose provided. The tank holds 13L and will overflow (behind the rear wheel) when full.



Electric Hook Up

240v electric hook up cable for use on campsites. Two cables are provided as on some campsites the socket can be quite far away (they can be connected together to increase length).

**Please do not operate driver side sliding door when power is connected.
Take care to ensure that cable is disconnected before driving away from campsite.**

Windscreen Cover

The windscreen cover can be attached to provide privacy on a campsite. There are also curtains on all windows in the rear.



Wastewater Empty

All campsites have an area to fill up with fresh water and dispose of 'grey' water (wastewater from the sink). You may wish to fill up & empty each day as you arrive or depart the campsite. The wastewater should be emptied into the black portable waste container).

Inventory

Kitchen

- Knives x4
- Forks x4
- Tablespoons x4
- Teaspoons x4
- Plates x4
- Bowls x4
- Cups x4
- Glasses x4
- Wine Glasses x2
- Pots/lids x2
- Frying Pans x2
- Kettle x2
- Toaster x1
- Chopping Board x1
- Knives x2
- Basin x1
- Tea Towel x1
- Stove Ignitor
- Utensils:
 - Bottle Opener x1
 - Tin Opener x1
 - Tongs x1
 - Ladle x1
 - Cooking Spoon x1
 - Scissors x1
 - Plastic Container x1
- Consumables:
 - Salt & Pepper
 - Cooking Oil
 - Tea
 - Coffee
 - Sweeteners
 - Kitchen Roll
 - Washing up liquid & Sponge
 - Bin Bags

General

- Folding Seats x2
- Folding Table x1
- Interior Table x1
- Levelling Ramps x2
- Power Cable x2
- Water Hose x1
- 4.5kg Gas Bottle x1
- Wastewater Bottle 15L x1
- Windscreen Cover x1

Safety

- First Aid Kit x1
- High Vis Vests x2
- Fire Extinguisher x1
- Carbon Monoxide Alarm x1
- Smoke Alarm x1

Other

- LPG Gloves x1
- Puncture Repair Kit x1
- Dustpan & Brush x1
- Umbrella x1
- Maps etc
- Playing Cards
- Electronics:
 - USB Splitter x1
 - Torches x2
 - USB to Cigarette Lighter x1

Useful Contacts

Trossachs Campers

Ferleyn House

Aberfoyle Road, (2 miles north of) Balfroon Station

Stirlingshire

G63 0SQ

<https://w3w.co/prepared.blanking.journals>

info@trossachscampers.co.uk

07760660692

RAC Breakdown Cover

If you have a problem, please contact Trossachs Campers on 07760660692

If you need to contact the RAC directly:

Breakdown Telephone Number: 01603 216366

Policy Number: TROS03VR02

Camping & Caravan Club

www.campingandcaravanningclub.co.uk

